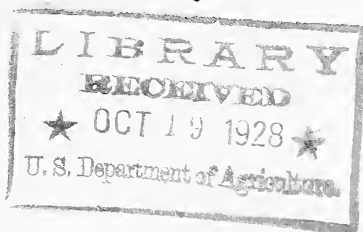
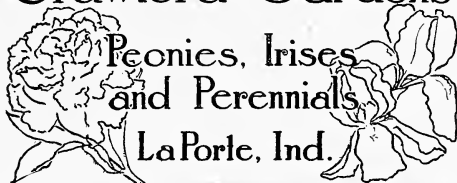


Historic, Archive Document

Do not assume content reflects current scientific knowledge, policies, or practices.

225
1928

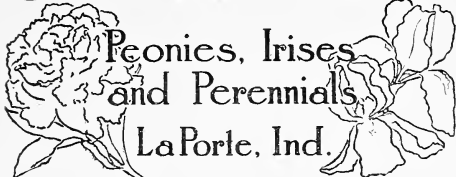
Crawford Gardens



MEMBER

American Association of Nurserymen
American Peony Society

Crawford Gardens



LOCATION

We are located at LaPorte, in Northern Indiana, on the main line of the New York Central Railroad and fifty-nine miles from Chicago. In a normal season the Peony blooms are at their best from the first to the fifteenth of June and we will be glad to have you visit our plantings at that or any other time. LaPorte is on the Lincoln Highway and easily accessible by automobile.

Mrs. William Crawford has been growing Peonies for more than thirty years and during that time has had under observation almost all of the varieties obtainable. Many have been discarded and some are still being tested for further comparison.

We realize that there is considerable difference of opinion regarding many varieties of peonies, and after many years of study and observation, we believe that this difference is due, first, to personal preference and, second, to different soil and climatic conditions. In our gardens, part of which are four miles from the city, we have several types of soil and frequently a variety which does very well in one location will, at the same time, be a disappointment in another part of the garden, although both have the same care and are from the same parent plant. Naturally, we can not foretell what will be the conditions in your garden, but surely there are plenty of varieties which will do well there, and so we urge that you do give all varieties which you buy a thorough trial and in this way, if in no other, you can determine for yourself which one you think best.

We have found that the singles, Japs and semi-doubles are more suited to the south, while the full and compact doubles which come later and open more slowly seem to do best in the north where the winters are more severe.

In compiling the present list, we have endeavored to give as accurate, clear and concise a description as our notes would permit. The varieties on which the members of the American Peony society have voted, show the rating given in the Symposium. Where no rating is given, the variety is one which is either of too recent introduction, or still in too few gardens to have been voted on. We believe that these descriptions will enable the average flower lover to determine more readily the type and color of bloom which will best suit his individual needs.

PEONIES

Herbaceous Peonies have been classified by the American Peony Society into eight distinct groups, or types and as we have followed this classification in our descriptions, the following is given for those unacquainted with the types.

Single—Blooms have but a single ring of broad guard petals, around a center filled with a mass of pollen-bearing stamens and seed-bearing carpels.

Japanese—Guard petals like the single type, but the process of doubling has begun and the filaments of the stamens have widened, while the anthers have become very large.

Anemone—A further step toward doubling. The filaments of the stamens have widened to narrow petals, which occur uniformly throughout the center of the bloom. The vestiges of anthers have disappeared but the central petals are still too narrow and short to be classed as a "bomb".

Semi-double—Producing petaloids in all stages of transformation at the same time. Pollen-bearing stamens visible throughout the whole bloom. Guard petals may or may not be well differentiated.

Crown—Carpels partly or fully developed into petaloids in center of flower, forming a high crown distinct from the surrounding collar of shorter petals and the usual type of guards. Sometimes crown and guards are different in colour from the collar.

Bomb—The petaloids, much wider than those of the anemone type, are quite distinct from the guards and form a globe shaped center, without collar or crown. No anthers are to be found.

Semi-Rose—All petals generally uniform as in the full rose type, but a few pollen bearing stamens are visible. Rather loose but more compact than the semi-double type.

Rose—Fully double. Generally impossible to distinguish the guard petals from the petaloids composing the rest of the bloom; but when guards are distinct, the bloom should be classed as "Bomb" type. No stamens visible.

CULTURE

Peonies should be planted in fertile, well drained soil; where they have not been grown before and where they will have full sunlight at least half of the day. They should not be planted close to a building and must be sufficiently distant from trees or shrubs, so that the fibrous roots will not take the moisture and fertility from the soil. The ground should be deeply prepared to a depth of eighteen to twenty-four inches, some time before the planting season, and if the soil is impoverished, manure which has rotted for at least two years can be stirred in. UNDER NO CIRCUMSTANCES MUST FRESH MANURE BE USED ANYWHERE NEAR PEONIES. They will not stand it; it causes indigestion.

The eyes or buds should be set one or two inches below the surface and the earth firmly pressed about the roots. Too deep planting will cause shy blooming. The first winter a light mulch should be put on after the ground has frozen, to keep the roots from heaving but this is only necessary the first year and should be removed early in the spring. Plants should be at least three feet apart and if more than one row is used, the rows should be four feet apart. When peonies are transplanted from one kind of soil to another, it sometimes requires two to three years for them to become well established. When once planted they should not be moved for eight or ten years.

A good hoe, combined with a strong back, is the best fertilizer! The soil must be kept well stirred up and free from weeds at all times. You can not cultivate too much, either before or after the blooming season. When an applied fertilizer is required, bone meal or wood ashes in small quantities may be worked in around the plants—but not in large doses. Do not form the habit of watering with the garden hose, let nature and your hoe sup-

ply the moisture, excepting in seasons of extreme drouth, when it is occasionally advisable to dig a small trench around the plant, about eighteen inches from the crown and pour water inside the trench. If the foliage is wet when the sun is on it, there is a tendency for the leaves to scald. The more care you give Peonies, the greater will be your reward in blooms.

While the peony is unusually free from disease, there are several infections which are attracting attention:

ROOT GALL, a knotty, globular growth of the roots, seemingly caused by a microscopic bacteria known as Nematoids, which infest many soils. No definite control is known, and there are various opinions as to the damage resulting, but the condition must be checked and to date the only methods recommended are, to carefully cut away all infected root and then to dust the root in a 50-50 mixture of powdered Bordeaux mixture and gypsum; to replant into fresh soil in which there is no decaying organic matter and to sterilize soil whenever possible.

BLIGHT or **BOTRYTIS**, a fungus infection which causes wilt, discolored leaves and bud blight. Sunlight and clean cultivation will go a long way. Cut off and burn any infected parts. A lime-sulphur spray has also been recommended. When dead tops are cut off and burned each fall there seems to be little danger of Blight.

BLACK ROT, a granular black decay which gradually consumes the root. Cut away infected portion, dust with gypsum and Bordeaux mixture and replant in fresh, clean soil.

HOLLOW CROWNS, a seemingly natural tendency in old clumps, when stems are cut too short and rain has an opportunity to seep down. Division does away with it, as it does not occur in young plants.

ANTS, if causing any damage it is that of a carrier, perhaps of the fungus causing Botrytis. Ants do not thrive in well cultivated soils.

From the foregoing, it can be seen that clean soil, sunshine and thorough, frequent cultivation are the best known preventatives and a major portion of the cure. Cultivate!

PRICES

Prices quoted are, in all cases, for standard divisions or one year roots, having from three to five eyes. We do not favor one eye divisions and do not believe that they are as satisfactory or as certain as the time proven roots of regular size. We strongly advise prospective purchasers to consider the advice of the oldest growers in this regard, all of whom have found that the vigor and blooming quality of the peony is weakened by too small and too frequent division. If the purchaser wishes to assume the risk and to wait a longer time for plants to bloom typically, we will furnish two eye divisions at one-half the price quoted for regular divisions, **provided that** the condition of our stock is such that these divisions can be obtained without too much injury to the parent plant and then **ONLY** when the regular price is not less than \$5.00.

We guarantee all roots to be true to name, healthy and vigorous.

All orders are accepted subject to stock being unsold upon receipt of order. We will use the greatest care to fill your order promptly, and will not substitute. We want satisfied customers and should we make mistakes, please let us know, that we may gladly and promptly correct them.

We do not pay postage, except on Iris, and if you do not want us to ship by express, please enclose postage with your order.

Cash should accompany orders.

Please bear in mind that, as each year's salable stock of many of the rare and choice varieties is limited, it will be well to place your order early that you may not be disappointed.

We can always supply a limited number of the Tree Peony, on their own roots, and also of the little *Tenuifolia*.



A Yard of Peonies

PEONIES

- ADDIELANCHA** (Brand)—Midseason. Rose type. Pure white, large and full, clustered. This variety was lost from the Brand collection for several years. Mr. O. F. Brand considered it his best white.
- ADELAIDE E. HOLLIS 7.6** (Hollis-1907)—Mid-season. Crown type. Rose white changing to pure white, with a large compact, globular crown. Tall, vigorous and a free bloomer.
- ADMIRAL DEWEY 6.3** (Hollis, 1904) Late mid-season. Crown type. Rose-pink lightly shaded heliotrope. Clustered. Vigorous. Tall and free flowering.
- ADMIRAL TOGO 7.4** (Hollis-1907)—Mid-season. Semi-rose type. Very dark crimson-carmine, compact and fairly flat. Medium tall, with deep green foliage, slightly veined red. Holds its color well, even in full sunlight.
- ADOLPH ROUSSEAU 8.5** (Desert and Mechin-1890)—Early mid-season. Semi-double type. Very dark, metallic, red. Large, with tall stiff stems and dark foliage veined with red. Lasts well as a cut flower. Free bloomer.
- AKSARBEN 7.0** (Rosenfield, 1908)—Mid-season. Semi-rose type. Dark crimson. Large and flat. Vigorous, tall and erect.
- ALBATRE 8.7** (Crousse-1885)—Midseason. Rose type. Very large, compact, milk white, with a few of the center petals edged with carmine. Fragrant. A very free bloomer of vigorous habit. Medium tall.
- ALBERT CROUSSE 8.6** (Crousse-1893)—Late. Bomb type. Rose white, slightly flecked with crimson, perfect and compact. Free blooming, on tall, stiff stems. Fragrant.
- ALEXANDRE DUMAS. 7.1** (Guerin-1862)—Early. Crown type. Violet rose crown; creamy white collar and center. Fragrant. Medium height. Free blooming.
- ALEXANDRIANA 7.1** (Calot, 1856)—Early. Rose type. Light violet-rose. Large, full, double and fragrant. Vigorous. Upright and free flowering.
- ALFRED DE MUSSET 7.4** (Crousse, 1885)—Late. Rose type. Milk white, with a blush center, flecked crimson. No odor. Large and compact. Medium height and habit.
- ALICE de JUIVECOURT 7.2** (Pela-1857)—Mid-season. Crown type. Creamy white color; guards and center lilac white, flecked with crimson. Fragrant. Dwarf and free.
- ALPHA AND OMEGA 6.7** (Pleas-1903)—Very early. Anemone type. Deep rose guards and bright yellow petals. Ruffled salmon-pink petals in center, changing to white. Medium. Clustered. Quite distinct.
- ALPHEUS HYATT 7.4** (Richardson)—Late. Rose type. Very large, rose pink of uniform quality, flat and double. When growers recognize what a fine variety this is, it will stand in the front rank.

- ALSACE LORRAINE** 8.8 (Lemoine)—Late, midseason. Semi-rose type. Rich creamy white, with the center petals delicately tinted brownish-yellow. Pointed petals, with water lily-like center. Heavy foliage, with stiff stems rising well above the plant. Strong and vigorous. Flowers in clusters. Very fine.
- AMANDA YALE** 7.8 (Brand-1907)—Mid-season. semi-rose type. Milk white, with some red stripes. Long, narrow petals, fringed on the edges. Large and loose. Medium tall and a very free bloomer.
- AMAZONE** 6.2 (Lemoine, 1899)—Early mid-season. Rose type. Cream white center, flecked crimson, with rose-white guards. Fragrant. Large flowers.
- A. M. SLOCUM** (Franklin)—Rose type. White, with central petals slightly edged with crimson. A few intermingled stamens give the bloom a creamy effect. Vigorous. Free bloomer.
- ANNIE LOUISE** (Hollis)—Mid-season. Rose type. Rose pink. A seedling bought from Mr. Hollis and introduced in 1920 by Mr. E. P. Wheeler as a variety of merit.
- A. P. SAUNDERS** 9.0 (Thurlow-1919)—Late. Flesh white, changing to almost pure white in the center, occasionally the guard petals being touched with crimson. Double long and curved.
- ARCHIE BRAND** 7.5 (Brand-1913)—Mid-season. Bomb type. Uniform sea-shell pink with a silvery border. Closely massed petals in a solid head, surrounded by broad drooping guard petals. Free blooming. Medium height. Delicate fragrance.
- ARMADINE MECHIN** 6.9 (Mechin-1889)—Mid-season. Semi-rose type. Medium compact, violet crimson, with stamens showing. Strong free bloomer. Spreading habit, with fairly stiff stems.
- ARMAND ROUSSEAU** 6.7 (Dessert and Mechin-1903)—Early. Semi-rose type. Clear carmine, with silvery reflex. Center fringed and mixed with golden stamens. Stiff stems. Dwarf.
- ASA GRAY** 8.1 (Crousse-1886)—Mid-season. Semi-rose type. Pale lilac, with minute spots of deeper lilac. Large. Fragrant. Medium height.
- ASSMANNSHAUSEN** 8.0 (Goos and Koenemann-1912)—Late. Flat rose type. Large loose flowers of pure snow-white. Very fragrant.
- AUGUSTE DESSERT** (Dessert-1920)—Cup shaped, of fine form, with velvetish-crimson-carmine, rounded petals. Visible stamens intermixed with the petals in many flowers. Distinct silvery reflex. Very large.
- AUGUSTE LEMONIER** 6.3 (Calot-1865)—Mid-season. Anemone type. Uniform reddish violet. Fragrant. Small to medium. Erect. A splendid landscape variety.
- AUGUSTE VILLAUME** 7.3 (Crousse-1895)—Late. Rose type. Dark violet-rose. Large, compact and globular. Tall and vigorous.
- AUREOLIN** (Shaylor-1922)—Medium early, rather dwarf. Yellow and pink. Mr. Shaylor calls it the nearest yellow which he has produced and one of his best varieties.
- AURORE** 8.0 (Dessert-1904)—Late. Semi-rose type. Lilac white, with lighter collar; center flecked with crimson, prominent stamens. Extra large. Fragrant. Medium tall.
- AVALANCHE** 8.7 (Crousse-1886)—Late mid-season. Crown type. Ivory white with center often splashed with carmine. Opens like a rose bud and is very fragrant. Excellent as a cut flower. Said to be identical with Albatre.
- BALL O' COTTON** (Franklin)—Rose type. Pure white, of good substance and medium size. Fragrant. Good grower.

- BANDE d' OR** (Crawford-1922)—Very early. Bomb type. Guards of clear china-pink. Bomb center of overlapping petals with a band of clear yellow down the center of each. Very fragrant. Not large, but is the first of the doubles to bloom. Good stiff stems. Vigorous, profuse bloomer.
- PARONESS SCHROEDER 9.0** (Kelway-1889)—Late. Rose type. White globe shaped flower with irregular petals. Fine substance and delicate color. Vigorous and a free bloomer.
- BAYADERE 8.7** (Lemoine-1910)—Mid-season. Rose type. Creamy white, large, of fine form and substance. Fine foliage, with strong erect stems. Very vigorous.
- BEAUTE FRANCAISE 6.5** (Guerin-1850)—Mid-season. Crown type. Guards and crown pale lilac-rose; cream white collar, crimson flecked center. Medium large. Fragrant. Erect and strong. Medium dwarf.
- BEAUTY'S MASK 7.9** (Hollis-1904)—Late. Crown type. Clear blush white, tinted* lilac, with a few pale yellow petaloids showing. Large and compact. Fragrant.
- BELISAIRE 7.5** (Lemoine-1901)—Mid-season. Semi-rose type. Pale lilac, splashed with minute dots of deeper lilac; guards and center flecked crimson. Large and globular. Medium height. Vigorous. Red stems.
- RELLE HOUGH 7.6** (Terry)—Late. Rose type. Silvery rose, with darker tints. Large.
- BEN FRANKLIN 7.6** (Brand-1907)—Medium early. Semi-rose type. Brilliant crimson with darker shades at base of petals. Medium size. Tall, stiff stems. A splendid commercial variety.
- BERTHA** (Terry-1905)—Late. Rose type. Bright crimson; very large, full and double.
- BESSIE MCGILL** (Terry)—Late. Semi-rose type. Deep pink outer petals, with an almost pure white center, showing a few golden stamens.
- BIEBRICH** (Goos and Koenemann-1912)—Late. Flat rose type. Flesh-pink, large.
- BLANCHE TURNER** (Terry)—Late. Delicate, lilac-pink with a center of cream color, tipped with white.
- BOULE de NEIGE 8.0** (Calot-1862)—Early mid-season. Semi-rose type. Milk white, with crimson flecked guards and center. Large. Globular and compact. Tall and erect. Free bloomer.
- BOUQUET OF FLOWERS** (Pleas-1913)—Mid-season. Rose type. Deep rose, with lighter pink center, changing to white. Clustered. So prolific in bloom that one stem with its open and half open blooms makes a whole bouquet.
- BRAND'S MAGNIFICENT 8.7** (Brand-1918)—Mid-season. Semi-rose type. Deep, dark red with a bluish cast. Medium height. Profuse bloomer.
- BUNKER HILL 7.6** (Hollis-1906)—Mid-season. Rose type. Bright Tyrian rose, full and double, with wide petals. Very large. Vigorous and free blooming.
- CAMEO**—Early midseason. Bomb type. Light lilac pink with some red markings. Fragrant. Clustered. Medium height. Vigorous and free flowering. A fine cut flower variety.
- CANARY BIRD**—Mid-season. Anemone type. Cream guards; center of bright yellow filamental petals, narrow and upright. Small flowers, but valuable as a yellow seed-bearer.
- CANDEUR** (Dessert-1920)—Silvery pink, slightly tinged lilac-rose, fading to iridescent white. Center touched with carmine. Large globular. Vigorous with fine clear green foliage.
- CANDIDISSIMA 7.1** (Calot-1856)—Early. Rose type. Creamy white with sulphur yellow center, petaloids tipped green. Very large. Strong grower and very free bloomer.

- CARMEN** 7.2 (Lemoine-1898)—Mid-season. Semi-rose type. Hydrangea-pink, sprinkled with fine pale lilac dots, center flecked with crimson. Very large, full and double. Tall erect, healthy grower.
- CARNEA TRIUMPHANS** 6.3 (Guerin, 1852)—Mid-season. Crown type. Pale pink guards and crown, with amber white collar. Fragrant. Medium size and habit.
- CECELIA KELWAY** (Kelway)—Midseason. Rose type. Light rose pink guards. Lighter pink center, with some petals tipped carmine.
- CELESTIA LEWIS** (Lewis-1921).—Crown type. Clear pink with white petals intermingled. Very double and compact. Fragrant. Tall and erect. Free bloomer.
- C. E. PLEAS** (Pleas)—Late. Semi-double. Pale lilac rose, with intermingled yellow stamens. Center of crimson splashed carpels around a small tuft of petals. Fragrant. Vigorous.
- CHARLES McKELLIP** 7.8 (Brand-1907)—Mid-season. Semi-rose type. Rich crimson with a few stamens and irregular but large silky petals. Very large. Free bloomer.
- CHARLES NEIDEL** (Wettengel-1919)—Mid-season. Semi-rose type. Soft blush-pink, with darker pink tints. Very large. Loose. Clustered. Vigorous. Free bloomer.
- CHARLES SEDGEWICK MINOT** 7.2 (Richardson)—Mid-season. Bomb type. Pale lilac rose, large, compact and globular. Tall, free bloomer.
- CHARLES VERDIER** (Verdier)—Late. Rose type. Lilac-carmine, with pink reflex. Large and flat. Fragrant. Vigorous.
- CHARLOTTE CUSHMAN** 7.6 (Hollis)—Late. Rose type. Solferino red. Large. Compact and globular. Tall.
- CHERRY HILL** 8.6 (Thurlo-1915)—Mid-season. Semi-rose type. Very deep garnet, showing a decided sheen. Few stamens visible. Very tall and erect.



Cornelia Shaylor

- CHESTINE GOWDY** 8.4 (Brand-1913)—Late mid-season. Crown type. Broad silvery pink guards with cream petals; center of deep pink splashed with crimson. Tall, stiff, slender stems. Delicate fragrance. Fine cut flowers when cut in bud.
- CHRISTINE RITCHIE** 7.3 (Hollis-1907)—Late. Rose type. Violet rose; guards slightly flecked. Large, compact and globular. Strong and vigorous.
- CLAIRE DUBOIS** 8.7 (Crousse-1883)—Late. Rose type. Uniform, clear violet rose, tipped with white. Very large and globular. Tall and erect. Vigorous.
- CLARA BARTON** 6.9 (Terry-1906)—Early. Semi-rose type. Pure white, with bright yellow stamens intermingled.

- CLARA HERSEY**—(Hollis)—“Rosey-pink, large size and strong habit.”
- CLEMENCEAU** (Dessert-1920) — Very late. Carmine, slightly shaded amaranth with silvery tints and very large silvery border. Very full and large.
- CONQUEROR** (Hollis, 1907)—Mid-season. Rose type. Lilac-rose, with lighter shades on guards and collar. Fragrant. Large and flat. Tall. Vigorous and free flowering.
- CORNELIA SHAYLOR** 9.6 (Shaylor-1917)—Delicate shell pink, shading to white. Large and fine.
- CORONATION** 8.2 (Kelway-1902) — Late mid-season. Creamy-white, with backs of guard petals a very pale pink. Base of petals tinted gold. Quite symmetrical.
- CROWN OF GOLD (COURONNE d'OR)** 8.1 (Calot-1873)—Late mid-season. Semi-rose type. Snow white, reflecting golden-yellow stamens which show thru the petals. Some carmine tips on center petals. Solid and compact, immense. Vigorous, free blooming.
- DAMASK ROSE** (Pleas-1912)—Medium-late. Rose type. Soft, damask-rose, full and double. Clustered. Good stems and robust growth.
- DAPHNE** (Dr. Earnshaw-1922)
- DAVID HARUM** (Brand-1920)—Bright red; guard petals large and well expanded. Large full and well-formed. Tall, straight stems, strong and vigorous. Good foliage; free bloomer.
- DELACHEI** 7.1 (Delache-1856)—Late mid season. Rose type. Violet crimson. Medium large. Strong and erect. Vigorous.
- DELICATISSIMA** 7.6—Mid-season. Rose type. Pale lilac rose. Fragrant and tall. Vigorous and free flowering. Similar to Floral Treasure.
- DORCHESTER** 7.7 (Richardson-1870)—Very late. Rose type. Salmon-pink. Good stems, upright and well shaped.
- DOROTHY E. KIBBY** (Hollis-1907)—White, flushed sulphur. Extra fine.
- DR. H. BARNSBY** 7.9 (Dessert-1913)—Late. Rose type. Solferino red, tinged purplish-crimson, changing to clearer tint with very pronounced bluish reflex. Strong stem. Clustered. Free blooming.
- DUC de WELLINGTON** 7.8 (Calot-1859)—Late mid-season. Bomb type. Two rows of large, snow white guards around sulphur-white center. Fragrant. Free blooming. Very fine cut flower. Tall with upright stems. In our opinion this is rated too low.
- DUCHESS de NEMOURS** 8.1 (Calot-1856)—Early. Crown type. Sulphur-white with greenish reflex changing to pure white; no red markings. Medium height, vigorous and good stems. Free blooming. Fragrant. Fine cut flower.
- DUKE OF CLARENCE** 7.3 (Kelway)—Mid-season. Crown type. Violet rose guards, with collar of cream white and a crimson flecked center. Large and compact. Fragrant. Tall and erect.
- E. B. BROWNING** 9.2 (Brand-1907)—Very late. Rose type. Large white, loosely arranged petals faintly washed with delicate pinkish-canary. In bud the outer petals show crimson markings on the back. Very fragrant. Tall, good foliage.
- EDITH FORREST** (Hollis-1918)—Mid-season. Bright pink, large, very full and double. Very fragrant. Tall with strong erect stems. Free bloomer.
- EDULIS SUPERBA** 7.6 (Lemon-1824)—Very early. Crown type. Bright mauve-pink, large and loose flat crown. Fragrant. Tall, stiff stems and good foliage. One of the best for cut flowers and a popular commercial variety. Another one which is rated too low.

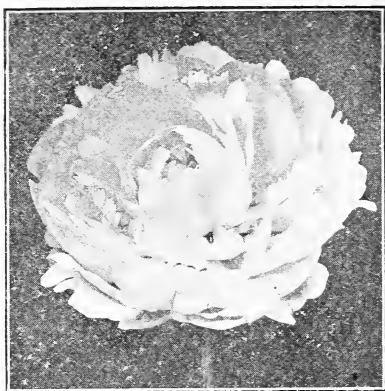
- EDWARD W. BECKER** (Franklin)—Semi-rose type. White, shaded light flesh color. Large and flat. Fragrant. Free bloomer.
- EDWIN FORREST 7.4** (Hollis-1904)—Mid-season. Bomb type. Dark crimson. Medium size and globular. Strong and vigorous.
- ELIZABETH BOYD** (Crawford-1922)—Rose type. Deep pink of clear uniform color. Large on strong stems. Profuse bloomer. Fragrant.
- ELLA C. KELWAY 7.2** (Kelway-1899)—Mid-season. Rose type. Lilac white guards, cream white central petals, crimson carpels and stigmas. Large. Fragrant. Medium height. Vigorous.
- ELLA WHEELER WILCOX 7.6** (Brand-1907)—Late. Bomb type. Deep shell pink. Elevated cup shaped center is surrounded by many rows of irregular fringed petals, the outer ones sometimes becoming a rich cream. Very fragrant. Good cut flower.
- ELWOOD PLEAS 8.7** (Pleas-1900)—Late mid-season. Rose type. Light violet rose, uniform intensity, shading to lilac-white. Fragrant. Medium tall, erect, strong grower. Large, free bloomer.
- EMMA** (Queen Emma) (Terry-1903)—Mid-season. Rose type. White, tinged with bright rose. Large, full and double.
- EMMA LEWIS** (Lewis)—Rose type. Clear pink. Very tall, strong grower. "A mammoth rose in color, shape and fragrance."
- EMPRESS** (Harrison)—Good double pink for cutting.
- ENCHANTMENT 7.7** (Hollis-1907)—Mid-season. Semi-rose type. Pale lilac, visible stamens. Tall, strong stems.
- ENCHANTRESSE 8.9** (Lemoine-1903)—Very late. Rose type. Creamy-white, guards splashed crimson. Center slightly flecked crimson with a greenish reflex. Very large and fragrant. Tall, erect and vigorous.
- ESTAFETTE 7.8** (Dessert-1910)—Early mid-season. Semi-rose type. Clear velvety crimson, with large border of silvery-rose. Large and globular.
- ETTA 8.0** (Terry)—Very late. Rose type. Clear hydrangea pink. Fragrant. Medium size and flat. Medium habit.
- FUGENE BIGOT 8.3** (Dessert-1894)—Late mid-season. Semi-rose type. Intense, brilliant Tyrian-rose, slightly tipped with silver. Large and imbricated. Compact.
- EUGENE VERDIER 8.3** (Calot-1864)—Late. Rose type. Delicate Hydrangea-pink, outer guard petals lilac-white. Large and compact. Fragrant. Rather dwarf, with erect strong stems. Free blooming.
- EUGENIE VERDIER 8.6** (Calot-1864)—Early. Semi-rose type. Pale Hydrangea-pink, lighter collar and a deeper center slightly flecked with crimson. Large, compact and flat. Fragrant. Medium tall, erect stiff stems. Free blooming.
- EUNICE SHAYLOR** (Shaylor-1918)—Mid-season. Rose type. Salmon-pink. Good stems and foliage. A free bloomer. A very fine peony.
- EUPHEMIA 8.1** (Terry)—Late. Semi-double. Pale lilac rose, with a center showing yellow stamens and crimson flecked carpeloids around a small tuft of center petals. Large. Fragrant. Vigorous.
- EVANGELINE 8.1** (Lemoine-1910)—Mid-season. Rose type. Pale lilac pink, splashed with crimson. Very large and flat. Imbricated petals. Fragrant. Erect and tall.
- EVENING GLOW 8.1** (Hollis-1907)—Late mid-season. Rose type. Lilac flushed white. Large.

- EXQUISITE** 8.7 (Kelway-1912)—Mid-season. Semi-double type. Cherry-rose, petals tipped with white. Golden anthers show in the center. Large. Fragrant.
- FANNY CROSBY** 7.5 (Brand-1907)—Early mid-season. Crown type. Guard petals delicate pink, surrounding a medium sized bomb of narrow incurved petals of deep lemon yellow, which some years are tipped white. Holds its color well in full sunlight. Medium size. Medium height. Stems straight. Vigorous.
- FARIBAULT** 8.2 (Brand-1918)—Late. Rose type. Deep rose, with a silver sheen; collar somewhat lighter than the guards; silver tipped center petals. Large. Fragrant. Free blooming.
- FELIX CROUSSE** 8.4 (Crousse-1881)—Late mid-season. Rose type. Brilliant, sustained red. Large, globular, solid and compact. Medium height, strong and vigorous. Fragrant. Free blooming.
- FERDINAND STOLICZKA** 7.5 (Richardson-1902)—Very early. Rose type. Broad delicate pink guards, with narrower pure white center petals. Very double. Erect. Free bloomer.
- FESTIVA** 8.0 (Donkelaer-1838)—Mid-season. Rose type. Pure-white, prominently flecked crimson. Very large and double. Dwarfish. Very fine for cutting and sometimes known as "Drop White."
- FESTIVA MAXIMA** 9.3 (Miellez-1851)—Early. Rose type. White, very large, with center petals flecked with crimson. Very tall, vigorous and the best of bloomers. Excellent for cut flowers.
- FLORAL TREASURE** 7.5 (Rosenfeld-1900)—Early mid-season. Rose type. Clear, even pink, shading lighter at center. Very large and full. Tall, with long stiff stems. Fragrant.
- FLORENCE NIGHTINGALE** 8.1 (Brand-1907)—Late. Rose type. Pure white, with an occasional crimson marking. Very large. Tall. Fragrant. Fine in the bud for cutting.
- FLOWRET OF EDEN** (Neeley).
- FLOY FRANK** (Terry)—Late. Purplish-rose tipped white. Free bloomer. Very fine.
- FRANCES SHAYLOR** 8.7 (Shaylor-1915)—Mid-season. Glistening white, waxy. Canary yellow stamenoids, tipped with gold, scattered thru the wider white petals. Large, globular.
- FRANCES WILLARD** 9.1 (Brand-1907)—White large rounded flower often having a raised cup shaped center enclosing golden stamens. Opens a blush white with an occasional carmine touch, changing to pure white. Good substance and excellent cut flower. Strong and sturdy growth. Our favorite among the Brand varieties.
- FRANCOIS ORTEGAT** 6.7 (Parmentier-1850)—Mid-season. Rose type. Deep amaranth red. Large and loose. Medium height. One of the best for cut flowers.
- GENERAL CUSTER** 6.1 (Terry-1905)—Mid-season. Semi-rose type. Deep pink edged with white, showing two rows of golden stamens. Large. Clustered. A very good commercial variety.
- GENERALE DAVOUST** 7.3 (Crousse-1898)—Late. Rose type. Amaranth, tipped crimson. Large, globular. Good stems and foliage.
- GENERAL GRANT** 6.3 (Terry)—Rose type. Bright madder red. Full and double. Large, vigorous.
- GENERAL MILES** (Terry)—Brilliant, light crimson. Full and globular. Tall. Free blooming.
- GEN. LAWTON** (Pleas)—Midseason. Semi-rose type. Clear, fadeless pink. Several double pinks have traveled about under this name, but we have the true variety, which on a well established plant is very pleasing.

GEORGE HOLLIS 7.7 (Hollis-1907)—Late. Rose type. Lilac white guards, pale rose-pink center. Large, globular, compact. Fragrant. Free blooming. Should have a higher rating.

GEORGE B. SOWERBY (Richardson)—Early. Rose type. Delicate pink guard petals; inner petals white, shaded with yellow, long, narrow and wrinkled.

GEORGE WASHINGTON 7.7 (Hollis-1907)—Mid-season. Semi-rose type. Dark crimson. Large, flat. Tall.



Georgiana Shaylor

GEORGIANA SHAYLOR 8.9 (Shaylor-1908)—Mid-season. Rose type. Flesh pink, changing to delicate flesh-white in center. Very large, sturdy, with good stems.

GERMAINE BIGOT 8.5 (Dessert-1902)—Mid-season. Crown type. Pale lilac-rose, with crimson flecks in the center. Broad petals; sometimes a few stamens show. Large, fairly compact. Medium height, strong erect stems. Free blooming.

GETTYSBURG (Hollis-1909)—Semi-rose. Deep blood red. Large and loose. Tall and upright. Vigorous.

GIGANTEA (Syn. Lamartine) 8.2 (Calot-1860)—Early mid-season. Rose type. Pale lilac-rose, center shaded somewhat darker; guards and collar fading to rose-white. Silvery sheen. Very large. Tall, with fair stems. Fragrant. Free bloomer. Extra fine for cutting.

GINETTE 8.8 (Dessert-1915)—Soft flesh-pink, shaded salmon. Large, cup shaped, imbricated. Clustered. Free blooming.

GISMONDA 8.2 (Crouse-1895)—Very late. Rose type. Flesh pink with delicate rose center. Very large, full, double. Very fragrant. Profuse bloomer. Strong and upright.

GLOIRE de CHARLES GOMBAULT 7.9 (Gombault-1866)—Mid-season. Crown type. Light rose crown and guards, shading to salmon. Center flesh pink. Some petals striped with carmine. Medium size, globular. Profuse bloomer. Good stems and foliage.

GLORIANA (Dr. Neeley-1921).

GLORY OF SOMERSET 7.8 (Kedway-1887)—Mid-season. Bomb type. Soft pink edged with silver tints.

GOLDEN HARVEST 7.3 (Rosenfeld-1900)—Mid-season. Bomb type. Pale lilac rose guards, center creamy-white, tipped with carmine. Medium size. Loose. Fragrant. Dwarfish but very profuse bloomer. Same as Jeanne d'Arc.

GOLDEN NUGGET 7.5 (Pleas-1913)—Very early. Anemone type. Rosy-lilac guards, with deep orange-yellow collar, shading to cream-white. Fragrant. Free bloomer. This has been listed as a Jap but is true anemone type.

- GOLIATH 7.0** (Hollis-1904)—Mid-season. Rose type. Tyrian rose, slightly tipped silver. Fragrant. Very large and compact. Tall and vigorous. Free bloomer.
- GOV. MORTON** (Teas-1917)—Mid-season. Rose type. Soft madder red, with a silver sheen. Vigorous plant, very free blooming. (The only introduction by E. Y. Teas, the noted horticulturist).
- GRACE D. BRYAN 6.9** (Rosenfeld-1908)—Very late. Rose type. Brilliant pink. Very large and double. Tall, vigorous. Free bloomer.
- GRACE LEWIS** (Lewis)—Late. Semi-rose type. Deep blush pink, shading lighter toward center. Full and double. Fragrant. Tall and branching. Free bloomer.
- GRACE LOOMIS 9.2** (Saunders-1920)—Late. Rose type. White, very full and double. Tall and vigorous.
- GRANDIFLORA 8.8** (Richardson-1883)—Very late. Rose type. Rose-white, uniform intensity. Very large and flat. Very fragrant. Tall, erect and vigorous. Free bloomer. One of the best.
- GRANDIFLORA NIVEA PLENA 8.1** (Lemon-1824)—Very early. Rose type. Milk-white, guards, small, pure white collar. Center of various sized petals, which when first opened have delicate salmon and sulphur tints. Large and globular. Medium height. Old but excellent.
- GRAZIELLA 7.0** (Unknown)—Mid-season. Rose type. Blush pink guards; center with pink, salmon and canary tints. Large and full. Medium height, strong and vigorous. Clustered. Free bloomer.
- GRETCHEN** (Goos and Koenemann-1911)—Ivory white, tinted flesh. Full, perfectly formed, no stamens. Dwarfish but strong and erect.
- GROVER CLEVELAND 8.2** (Terry-1904)—Late. Rose type. Dark crimson. Very large and full. Strong and vigorous. One of the best and an excellent cut flower.
- H. A. HAGEN 7.7** (Richardson)—Late. Rose type. Clear, violet-rose, uniform throughout. Perfect double. Fragrant. Medium height, erect. Free blooming.
- HARRIET BEECHER STOWE** (Hollis, 1907)—Early mid-season. Semi-double. Hydrangea pink, changing to milk white in the center. Guards striped and flecked crimson. Large and loose. Erect, medium tall and vigorous. Free bloomer.
- HARRIET BEECHER STOWE** (Hollis-Anderson)—Mid-season. Semi-rose type. Cream white, showing yellow stamens. Fine texture and substance. Vigorous. This is not the original of same name by Hollis, but was sent by him to Miss Anderson, for the well known variety. One enthusiast said, when he first saw it, that he would be willing to crawl on his knees from his home to the city where he had seen it in order to possess it. Very limited stock.
- HARRIET FARNLEY 8.2** (Brand-1916)—Late mid-season. Rose type. Soft pink.
- HENRI DEMAY 6.9** (Calot, 1866)—Mid-season. Bomb type. Brilliant aniline red, with silver reflex; center petals slightly fringed. Vigorous and free flowering.
- HENRY AVERY 8.5** (Brand-1907)—Late. Shell pink guards, with center tinted green and white, tinged with carmine. Clustered. Medium size. Tall and vigorous. Very distinct. Fragrant.
- HENRY WOODWARD** (Grandiflora) 8.8 (Richardson)—See Grandiflora.
- HERCULES 8.1** (Terry)—Mid-season. Semi-rose type. Bright pink, tipped white. Tall.
- H. R. H. PRINCESS LOUISE**—Mid-season. Pink.

- INDIAN** (Brand)—Late. Deep red. Good stems and foliage. Very desirable because of its lateness.
- ISAAC LEA** 6.0 (Richardson)—Late mid-season. Rose type. Rose pink with slight purple tint. Very large and double.
- IVANHOE** (Pleas-1913)—Mid-season. Semi-rose type. Ruby petals alternated with rows of golden stamens. Tall, stiff stems. Good foliage. Vigorous.
- JAMES BOYD** 9.0 (ThurLOW-1919)—Late. Flesh pink, changing to white, with yellowish-salmon tints at base of petals. Guards sometimes touched with green and crimson. Fringed. Fragrant.
- JAMES KELWAY** 8.7 (Kelway-1900)—Early mid-season. Rose type. White, giant flowers, very double and full, borne in clusters. Strong and pleasant fragrance. A tall vigorous plant, excellent foliage and free blooming.
- JEANNE d'ARC** 7.9 (Calot-1858)—Mid-season. Crown type. Pale lilac rose center and guards. Collar of cream white, shaded with sulphur. Center sometimes flecked crimson. Fragrant. Medium tall, vigorous. Free bloomer.
- JEANNE GAUDICHAU** 8.3 (Millet-1902)—Late. Delicate blush white, changing to white at tips of scalloped petals. Some carmine markings. Large and well formed.
- JEANNOT** 8.9 (Dessert-1918)—Midseason, rose type. Flesh pink, faintly tinted lavender, shading to salmon pink at base of petals and gradually changing to silvery white. Large and cup shaped. Imbricated.
- JENNIE E. RICHARDSON** (Hollis-1909)—Crown type. Broad delicate pink guards, cream-white center crown. Large and perfectly formed. Free bloomer. Said to be the best of the Hollis varieties.
- JESSIE SHAYLOR** 8.5 (Shaylor-1916)—Mid-season. Delicate deep cream with pink reflex. Large and flat. Tall, stiff stems. Fragrant.
- JOHN M. LEWIS** (Lewis)—Late. Bomb type. Blush white, with pink shadings. Very full. Strong, stiff stems. Fragrant. Good cut flower. Said to be the best of the Lewis seedlings.
- JOHN W. BOYD** (Crawford-1922)—Mid-season. Rose type. Deep lilac pink. Large. Good stem. Vigorous. Free bloomer.
- JOSEPH GRIFFIN** 7.3 (Pleas-1909)—Semi-rose type. Rosy pink, tipped pure white. Full. Clustered. Tall, strong and upright.
- JUBILEE** 8.4 (Pleas-1908)—Mid-season. Rose type, ivory white, changing to pure white. Very large flowers in clusters on tall stems. Buds touched with pink. Fine foliage.
- JUDGE BERRY** 8.6 (Brand-1907)—Early. Semi-rose type. White, tinted with delicate, soft pink. Pink tints in bud. Large, flat and shows some stamens. Fragrant. Medium tall. Profuse bloomer.
- JULIA WARD HOWE** (Hollis-1906)—“Pink suffused with white.” The grower from whom we obtained this claimed it to be the finest of the Hollis varieties.
- JUNE DAY** (Franklin)—Rose type. Light flesh pink, deeper toward center. Faint lavender marking on edge of some petals. Fragrant. Tall and vigorous.
- KARL ROSENFELD** 8.8 (Rosenfeld-1908)—Mid-season. Semi-rose type. Brilliant, dark crimson. Very large. Globular and compact. Tall and vigorous. Profuse bloomer.
- KATHARINE HAVEMEYER** (ThurLOW-1921)—Late mid-season. Rose type. Flesh pink; broad, rounded guard petals slightly notched at the ends; narrow fringed center petals. Large and full. Fragrant.

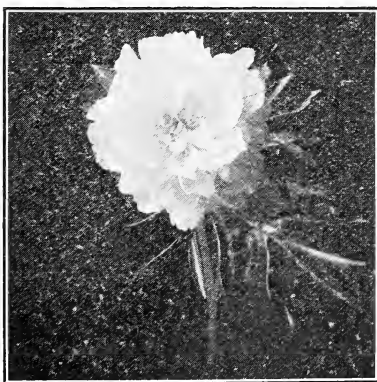
- KELWAY'S GLORIOUS** 9.8 (Kelway-1909)—White, large flowers with outer petals faintly touched with pink, very sweetly scented. Tall, vigorous plant and a free bloomer.
- KELWAY'S QUEEN** 8.8 (Kelway-1909)—Late. Rose type. Deep flesh pink. Center slightly marked with carmine. Fragrant. Large.
- KING OF PEACE** (Hollis-1909)—Early. Rose type. "Pure white, very large, full double."
- LA COQUETTE** 6.8 (Guerin-1861)—Mid-season. Crown type. Light pink guards and crown with rose-white collar; center flecked with crimson. Large and globular. Fragrant. Medium height. Strong and erect. Free blooming.
- LADY ALEXANDRA DUFF** 9.1 (Kelway-1902)—Mid-season. Pale rose shading to light rosy white. Immense, flat and double. Fragrant. Clustered. Tall, stiff stems. Vigorous and free blooming. Very fine and rare.
- LADY BERESFORD** 7.8 (Kelway-1895)—Mid-season. Rose type. Delicate blush-pink, tipped carmine. Large and well formed. Slightly fragrant. Medium height. Vigorous.
- LADY CURZON** 7.6 (Kelway-1901)—Early. Crown type. Lilac-white, with creamy collar. Medium large. Fragrant. Medium height.
- LADY EMILY** 8.6 (Pleas-1907)—Mid-season. Rose type. Ivory-rose-pink shading to primrose. Large, loose cup shaped flower with a few golden stamens. Waxy substance and good quality. Medium tall, sturdy and erect, with good foliage.
- LADY IRIS** 7.9 (Pleas)—Mid-season. Semi-rose type. Delicate salmon-pink, shading deeper toward the center. Large, convex, clustered. Fragrant. Tall. Good strong stems and if not disbudded will throw from seven to eleven blooms on a stem. Strong and healthy. With us one of the very best of the Pleas peonies.
- LADY OF LANGPORT** (Kelway)—Fine double pink.
- LAFAYETTE** 7.8 (Dessert-1904)—Mid-season. Rose type. Light violet rose, shading to white. Very large, compact and flat. Very fragrant. Lasts well. Medium height. Exceptionally fine and distinct.
- LA FEE** 9.2 (Lemoine-1906)—Early. Crown type. Mauve-rose guards, with creamy white collar. Very long petals. Very large, globular, compact and double. Fragrant. Tall and vigorous. Free blooming.
- LA FRANCE** 9.0 (Lemoine-1901)—Very late. Rose type. Rose-white, outer petals splashed with crimson. Very large, compact and globular. Fragrant. Tall and strong. Free bloomer.
- LA LORRAINE** 9.1 (Lemoine-1901)—Mid-season. Rose type. Creamy-white, with very faint pink tints. Enormous. Globular. Free bloomer.
- LAMARTINE** 8.4 (Lemoine-1908)—Mid-season. Rose type. Rose-carmine, with silvery-white border. Imbricated petals. Large. Fragrant. Tall. Free bloomer.
- LAMARTINE** Syn. *Gigantea* 8.3 (Calot-1860).
- LA PERLE** 8.5 (Crousse-1885)—Mid-season. Rose type. Deep lilac-white, with blush center, crimson flecked. Fragrant. Strong. Free bloomer.
- LA ROSIERE** 8.3 (Crousse-1888)—Mid-season. Semi-double type. Large pure white petals with prominent golden stamens. Large and flat. Clustered. Medium height. Free blooming.
- LA TENDRESSE** 8.1 (Crousse-1896)—Early. Rose type. Milk white, slightly splashed and flecked with carmine. Fragrant. Large, clustered. Tall and strong. Free blooming.

- LA TULIPE** 7.5 (Calot-1872)—Late mid-season. Semi-rose type. Lilac-white, outer guard petals striped crimson. Fragrant. Enormous and globular. Tall and vigorous. Free bloomer.
- LAURA DESSERT** S.S (Dessert-1913)—Early. Rose type, cream white with canary yellow center. Large and full. As near yellow as any yet introduced.
- LAURA PLEAS** (Pleas, 1900)—Early. Semi-rose type. Brilliant deep carmine-rose, with a silver tips. Vigorous and free flowering.
- LA VERNE** (Pink Baroness Schroeder) (Kelway)—Mid-season. Rose type. Deep shell pink, delicately tinted. Large, flat and full. Fine cut flower. Good stems and foliage.
- LA VESTALE** 7.1 (Calot-1872)—Mid-season. Bomb type. Rose-white guards; cream-white center. Medium size and compact. Erect and tall. Vigorous and a prolific bloomer.
- LE CYGNE** 9.9 (Lemoine-1907)—Mid-season. Rose type. Pure milk-white with incurved petals. Immense and symmetrical. Fragrant. Tall, stiff stems. Free bloomer. There is no better peony.
- L'ELEGANTE** (Guerin-1857)—Mid-season. Perfect rose type. Clear, bright rose. One of the good ones which has been overlooked.
- LEMOINE LEWIS** (Lewis)—Late. Semi-rose type. Clear pink. Full and double. Fragrant. Tall. Free bloomer.
- LENA HOUGH** (Terry)—Mid-season. Rose type. Bright purplish rose, tip white; yellow stamens showing through flower. Vigorous.
- LEVIATHAN** 7.0 (Kelway-1899)—Mid-season. Rose type. Bright, deep rose. Very large.
- LEWIS' AMERICAN BEAUTY** (Lewis)—Late. Bomb type. Large, brilliant, rich crimson. Very tall, upright strong stems. Free blooming. Fine for cutting.
- LEWIS** No. 16 (Lewis).
- LEWIS** No. 45 (Lewis).
- LIBERTY** (Hollis-1905)—Rose-pink. Vigorous habit.
- LILLIAN GUMM** (Gumm-1921)—Mid-season. Rose type. Deep pink, reflecting mauve. Resembles LaFrance but has a better, stronger stem. Very large. Profuse bloomer.
- LIMOSSEL** (Kelway)—Mid-season. Rose type. Bright, clear lilac rose. Very fragrant. Large and full.
- L'INDISPENSABLE** 7.3 (Unknown)—Late mid-season. Rose type. Delicate pink. Large and full. Fine for cutting.
- LIVINGSTONE** 8.1 (Crousse-1879)—Late. Rose type. Pale lilac-rose, with pale silver sheen. Large, clustered. Full and imbricated. Erect and strong. Very free bloomer. Fine for cutting.
- LONGFELLOW** 9.0 (Brand-1907)—Brilliant crimson, with cherry tones. Large and symmetrical. Tall, stiff stems. Good foliage. Heads the list of all bright reds.
- LORA DEXHEIMER** 8.4 (Brand-1913)—Early. Semi-rose type. Intense flaming crimson, shading darker at base of petals. Large and flat. Medium height. Free bloomer.
- LORCH** (Goos and Koenemann)—Midseason. Full rose type. Creamy-white, tinted pale rose. Compact. Tall stems.
- LORD KITCHENER** 7.6 (Renault)—Very early. Rose type. Cherry-red. Valuable for its earliness.
- LOUISA BRAND** 7.8 (Brand-1913)—Mid-season to late. Semi-rose. Blush-white, changing to white. Cone shaped center. Medium size. Fragrant. Tall and vigorous. Free bloomer.

- LOVELINESS** 8.8 (Hollis-1907)—Mid-season. Rose type. Hydrangea pink, changing to lilac white. Large, compact and flat. Fragrant. Medium height.
- LUCY E. HOLLIS** 8.1 (Hollis-1907)—Very late. Rose type. Violet white, shading to pale lilac rose at crimson flecked center. Large, full and double. Fragrant. Medium height.
- LUELLA SHAYLOR** (Shaylor-1917)—Yellow, with white tipped petals.
- LUETTA PFEIFFER** 8.4 (Brand-1916)—Early. Semi-rose type. Glistening white, tinted pink, with a few golden stamens. Very large. Profuse bloomer. Long, stout stems.
- LYNDA** 7.3 (Brand-1907)—Late. Rose type. Blush white, with occasional crimson markings. Fragrant. Tall, stiff stems.
- MABLE CLAIRE** (Pleas-1916)—Mid-season. Semi-rose type. Satiny cerise, with intermingled golden stamens. Creased and crumpled petals form a concave bloom. Sturdy with good foliage.
- MABLE L. FRANKLIN** (Franklin-1919)—Rose type. Outer petals light pink. Deeper pink toward center. Inner petals slightly edged with lavender. Fragrant. Free bloomer.
- MME. AUGUSTE DESSERT** 8.6 (Dessert-1899)—Early mid-season. Semi-rose type. Violet rose, guards and center slightly flecked crimson. Very large. Medium height. Erect. Free bloomer.
- MADAME BENOIT RIVIERE** 8.0 (Riviere-1911)—Soft rose, shaded salmon. Large and cup shaped.
- MADAME CALOT** 8.1 (Mieliez, 1856) Early. Rose type. Pale hydrangea pink guards, with deeper center and sulphurish cream collar. Fragrant. Very large and vigorous.
- MADAME DE TREYERAN** 8.2 (Dessert-1889)—Early. Semi-rose type. Rose white, flecked with crimson. Very fragrant. Large, compact and flat. Medium height. Erect. Free bloomer.
- MADAME DE GALHAU** 7.5 (Crousse-1883)—Late. Rose type. Rose white, with pale lilac rose center. Medium large, compact and globular. Fragrant. Medium height. Vigorous. Free bloomer.
- MADAME DE VATRY** 7.7 (Guerin, 1873)—Mid-season. Crown type. Lilac white guards and crown; sulphur white collar of wide petals and center flecked crimson. Fragrant. Large and compact. A splendid variety for cutting.
- MADAME DE VERNEVILLE** 7.9 (Crousse-1885)—Early. Bomb type. Pure white, touched with faint pink.
- MADAME EMILE DUPRAZ** 7.4 (Riviere-1911)—Soft carmine pink, with deeper shadings and silvery reflex. Very large and cup shaped. Clustered.
- MADAME EMILE GALLE** 8.5 (Crousse-1881)—Late mid-season. Rose type. Delicate sea-shell pink, touched with heliotrope and lavender. Large. Free bloomer. Vigorous and tall.
- MADAME EMILE LEMOINE** 8.9 (Lemoine-1899)—Mid-season. Semi-rose type. Milk-white. Large, double and cup shaped with imbricated petals. Medium height. Vigorous. Free bloomer.
- MADAME FOREL** 7.7 (Crousse-1881)—Late mid-season. Rose type. Deep pink, with silvery reflex. Very large and full.
- MADAME GAUDICHAU** 8.8 (Millet-1902)—Very dark crimson-garnet. Large and globular. Tall and vigorous.
- MADAME GEISSLER** 7.9 (Crousse-1880)—Late mid-season. Rose type. Rose pink with darker shades at base of petals. Very large and compact. Imbricated. Tall, fairly erect stems.

- MADAME JOANNE SALLIER** 8.3 (Paillet)—Early. Semi-double type. Violet rose, slightly flecked with crimson. Large. Tall, strong stems.
- MADAME JULES DESSERT** 9.4 (Dessert-1909)—Mid-season. Rose type. Pure white, overlaid with a sheen of delicate blush. Pink center. A few stamens. Very large and imbricated. Stiff stems. Vigorous.
- MADAME LEBON** 6.8 (Calot-1888)—Late. Rose type. Cherry-pink, tinged aniline red; cream white collar and crimson flecked center. Fragrant. Large and full.
- MADAME LEMONIER** 8.0 (Calot-1860)—Late mid-season. Rose type. Pale lilac rose, changing to lilac white; collar splashed with crimson. Fragrant. Large and compact. Tall and vigorous.
- MADAME PLEAS** 6.6 (Pleas-1912)—Mid-season. Crown type. Lilac guards, with crown or rosy-flesh showing lilac and crimson markings. Yellow stamens. Unique and dainty.
- MADAME SAVREAU** 7.9 (Savreau-1906)—Early mid-season. Crown type. Lilac white, with cream yellow collar. Large and compact. Tall. Erect.
- MADAME SCHMIDT** 6.9 (Calot-1873)—Late. Rose type. Pale lilac rose. Large and compact.
- MAID OF HONOR** (Hollis)—Early. Deep pink. Large and round.
- MARCELLE DESSERT** 8.2 (Dessert-1899)—Mid-season. Crown type. Milk-white with small lilac splashes. Center flecked crimson. Fragrant. Large. Medium height.
- MARECHAL VAILLANT** 7.5 (Calot-1867)—Late. Rose type. Dark mauve-pink. Very large and compact. Tall, thick stem, needs support to hold up the heavy bloom. Very good.
- MARGUERITE GERARD** 8.4 (Crousse-1892)—Mid-season. Semi-rose type. Pale hydrangea pink, changing to white. Crown center, with stamens, flecked with carmine. Medium height. Vigorous. Free bloomer.
- MARIE CROUSSE** 8.9 (Crousse-1892)—Mid-season. Bomb type. Soft salmon pink shading to satiny-lilac. Enormous, full flowers on long strong stems. Very fine.
- MARIE STUART** 7.8 (Calot-1856)—Mid-season. Crown type. Delicate lavender flecked with crimson, changing to pure white. Clusters of three.
- MARIE JACQUIN** 8.3 (Verdier)—Mid-season. Semi-double. Rose white changing to lilac white. Prominent yellow stamens. Fragrant. Strong and vigorous. Until well established plant throws single blooms.
- MARIE LEMOINE** 8.5 (Calot-1869)—Very late. Rose type. Ivory-white with occasional crimson marking. Fragrant. Large. Strong, medium height. Fine commercial variety.
- MARTHA BULLOCH** 9.1 (Brand-1907)—Mid-season. Rose type. Shell pink, with silvery tints, shading to deep rose pink in center. Fragrant. Enormous. Tall, strong and erect. A superb pink.
- MARY A. LIVERMORE** 7.9 (Hollis-1907)—Lilac-pink, tipped white. Large.
- MARY BAKER EDDY** 7.5 (Hollis-1910)—Mid-season. Rose type. Rose pink, changing to white with heliotrope shades. Rather dwarf, but very sturdy, with strong stems. Free bloomer.
- MARY BRAND** 8.7 (Brand-1907)—Mid-season. Crimson with silky sheen. Center of fringed petals with golden stamens interspersed. Very large. Fragrant. Medium height. Strong stems. Fine for cutting, and landscaping.

- MARY L. HOLLIS** 7.9 (Hollis-1907)—Mid-season. Rose type. Pale lilac rose guards, with lilac white center showing few golden stamens. Large and flat. Tall and erect.
- MARY WOODBURY SHAYLOR** 9.4 (Shaylor-1916)—Fresh, clear pink guards, with a creamy center, golden canary at the heart. Dwarf habit with stiff stems and wide leaves.
- MATHILDE DE ROSENECK** 7.9 (Crousse-1883)—Late. Rose type. Pale lilac rose with deep carmine center. Wide petals. Fragrant. Tall, strong and vigorous. Free blooming.
- MAUD L. RICHARDSON** 8.5 (Hollis, 1904)—Late. Rose type. Pale lilac rose, center slightly lighter than guards. Fragrant. Flat, medium compact. Long stems. Medium habit.
- MEADOWVALE** (Hollis-1903)—Mid-season. Bomb type. Deep solferino red. Fragrant. Compact. Medium height.
- MIDNIGHT** (Brand) 7.3 (Brand-1907)—Medium early. Semi-rose type. Very deep maroon. Large and loose.
- MIDNIGHT** (Unknown)—Good and Reese say: "Its color is black with garnet hues at the base of the petals." Entirely different from any other Midnight that has been introduced.
- MIDNIGHT** (Hollis)—Very deep maroon, nearly black. Foliage dark red until late in the season.
- MID-SUMMER NIGHT'S DREAM** 8.5 (Peas-1906)—Mid-season. Rose type. Ivory-white with pale yellow center. Large. Fine cut flower variety.
- MIGNON** 8.7 (Lemoine-1908)—Mid-season. Rose type. Lacey-white, shading to amber cream; crimson flecked center. Large and compact. Very fragrant. Medium height, strong stems.
- MILTON HILL** 9.0 (Richardson-1891)—Late. Rose type. Pure pale lilac rose. Large and compact. Medium height. Vigorous. One of the best.
- MINNIE SHAYLOR** (Shaylor)—Semi-rose type. White, deep cup shape, with golden center. Said by connoisseurs to be the best of the Shaylor varieties.
- MIREILLE** 7.7 (Crousse-1894)—Very late. Rose type. Pure milk-white. Very large and full. Medium height.
- MIRIAM** (Chase)—Semi-double. Rich pink with lemon yellow stamens. Strong. Free blooming.



Miss Salway

- MISS SALWAY** 7.8 (Kelway-1889)—Early mid-season. Crown type. Lilac white, with lighter collar. Very large and compact. Fragrant. Tall and strong. Free bloomer. The best in our garden in 1924 and a wonderful flower. The low rating must have been given on the false variety which is in general commerce, for the true variety is certainly above 9.0 in rating.

- MLLE. JEANNE RIVIERE** 8.0 (Riviere-1908)—Pale rose with sulphur-white center. Fragrant.
- MODELE de PERFECTION** 7.8 (Crousse-1895)—Late. Rose type. Violet-rose, darker shades in center. Large, compact. Fragrant, Dwarfish. Free bloomer.
- MODESTE GUERIN** 7.8 (Guerin, 1845)—Mid-season. Rose type. Solferino red. Fragrant. Full double on established plants.
- M. BASTIAN LEPAGE** 7.1 (Crousse, 1885)—Mid-season. Crown type. Uniform pure mauve pink, with a marked silvery reflex. Very large, globular. Fragrant. Tall and vigorous.
- MONSIEUR BOUCHARLAT, AINE** 7.1 (Calot-1868)—Late mid-season. Semi-rose type. Light pink, with silvery reflex. Large, full and compact. Vigorous. Free bloomer.
- MONSIEUR DUPONT** 8.3 (Calot-1872)—Mid-season. Semi-rose type. Ivory-white, center boldly splashed with crimson. Very large. Fragrant. Tall, with erect stems. Free bloomer.
- MONSIEUR JULES ELIE** 9.2 (Crousse-1888)—Early mid-season. Bomb type. Pale lilac rose, deeper at base of petals and with a silvery sheen. Very large. Compact. Fragrant. Medium height and vigorous. Tall, strong stems. A superlative flower.
- MONSIEUR KRELAGE** 7.7 (Crousse-1882)—Late mid-season. Semi-rose type. Dark solferino red, tipped silver. Large and compact. Slight fragrance. Vigorous. Free bloomer.
- MONSIEUR MARTIN CAHUZAC** 8.8 (Dessert-1899)—Mid-season. Semi-rose type. Very dark purple-garnet, with black reflex. Medium large. Good, erect habit; free bloomer. The darkest of all reds, nothing better.
- MONT BLANC** 8.4 (Lemoine-199)—Mid-season. Rose type. Milk-white; center slightly tinted rose. Very large and compact. Fragrant. Free bloomer.
- MOSES HULL** 8.1 (Brand-1907)—Mid-season. Rose type. Dark shell-pink. Very large and full. Fragrant.
- MRS. A. G. RUGGLES** 8.2 (Brand-1913)—Late. Semi-double type. Pale lilac-white, changing to pure white. Clustered. Large. Slightly fragrant. Vigorous.
- MRS. BARRETT** (Pleas)—Mid-season. Rose type. Pale pink, with lavender tints. Intermingled golden stamens. Mrs. Jewell says this is the best of all the Pleas peonies.
- MRS. CAREW** 7.8 (Brand-1907)—Mid-season. Rose type. Delicate, silvery blush; some central petals with carmine edges. Large and full.
- MRS. EDWARD HARDING** 9.9 (Shaylor-1918)—Mid-season. Rose type. Of this Mrs. Harding writes: "The terminal blooms on a four year old plant not disbudded, were seven inches. The petals are large thruout, guard petals on terminal bloom mentioned being almost three inches wide. It is pure white, no red marks or lines. Some anthers show in the laterals. On the terminal only very occasional anther hidden deep in the broad petals. The plant was forty inches high with large, clean, dark foliage and big strong stems. No fragrance. It is a superb peony."
- MRS. JENNIE R. GOWDY** (Brand-1920)—"Pinkish-white; petals long and narrow, minutely flecked with red. Central petals splashed crimson. The ruffled peony."
- MRS. C. S. MINOT** 9.3 (Minot-1914)—Late. Rose type. Pale shell pink; cream tinted center, with golden lights at base of petals, occasionally marked with carmine. Broad, waxy petals of fine substance. Very large. Stiff stems and good foliage.
- MRS. H. B. MORENUS** (Crawford-1922)—Semi-rose type. Delicate pink. Convex. Fragrant. Clusters of five to nine on good stems.

- MRS. JOHN M. LEWIS** (Lewis-1920)—Mid-season. Rose type. Very dark, velvety, ox-blood red. Large and compact. Vigorous. Fine as a cut flower.
- MRS. JOHN SMYTHE FOGG 8.4** (Hollis-1907)—Mid-season. Rose type. Light pink, yellowish white collar, center crown a light pink. Incurved petals. Vigorous. Free blooming.
- MRS. M. B. BECKETT** (Pleas-1910)—Semi-rose type. Guards deep rose, with petaloids a silvery rose and intermingled stamens. Flowers in clusters on tall stem. Good foliage.
- MRS. MORGAN LEWIS** (Lewis)—Rose type. Lavender pink. Full and double. Fragrant. Medium size. Free bloomer.
- MRS. M. P. CLOUGH** (Shaylor)—Salmon.
- MRS. SHAYLOR FORCE** (Shaylor)—White and yellow.
- MRS. WILLARD** (Terry)—Late. Broad, purplish-rose guard petals; center flesh color, tipped white, and petals fringed. Fragrant.
- NANCE O'NEAL** (Hollis-1906)—Deep crimson, shaded amaranth. Large.
- NELLIE PLEAS** (Multiflora) (Pleas-1910)—Early. Rose type. Silver-pink. Clusters of eight to twelve on one stem. Very lasting.
- NINA SECOR** (Secor-1922)—Mid-season. Rose type. Pure white. Full and waxy.
- NORFOLK 7.6** (Richardson)—Late mid-season. Rose type. Pale lilac-rose, with deeper center. Very large and compact. Fragrant. Medium tall.
- NYMPH** (Harrison)—Mid-season. Semi-rose type. Dainty China-pink. Free bloomer.
- NYMPHAE 9.1** (Thurlow-1919)—Mid-season. Creamy-white with yellow stamens and a golden reflex. Wide-notched petals have somewhat rolled edges. Large and flat.
- OCTAVIE DEMAY 8.5** (Calot-1867)—Mid-season. Crown type. Delicate Hydrangea-pink guards and center; collar almost white. Fragrant. Large and flat. Dwarf. Strong stems.
- OFFICINALIS RUBRA PLENA**—Very early. Brilliant crimson. Large and globular. The earliest of all and commonly called the "Decoration Day Red."
- OLD SILVER TIP 7.6** (Brand-1918)—Mid-season. Semi-rose type. Soft madder-rose with silver sheen. Large. Medium height. Profuse bloomer. Fine for cutting.
- OPAL 8.5** (Pleas-1908)—Mid-season. Rose type. Dainty pink guards, changing to French white about a center of opalescent pink. Clustered. Tall, strong and upright. Very choice.
- PALLAS 8.6** (Terry)—Early mid-season. Semi-double. Delicate Hydrangea-pink, shading to white in the center. Very large. Prolific bloomer. One of the best peonies ever sent out. Not half appreciated.
- PARADISE 8.5** (Hollis-1907)—Early mid-season. Rose type. Hydrangea pink guards; center lilac-white, changing to milk-white. Fragrant. Very large and compact. Medium height. Free bloomer.
- PASTEUR 8.0** (Crousse-1896)—Mid-season. Rose type. Delicate pink, nearly white, shading to tea-rose at base of petals. Exceptionally fine.
- PAUL FISCHER 7.2** (Richardson)—Mid-season. Rose type. Pale lilac-rose. Large and globular. Fragrant.
- PEARLED ROSE 7.5** (Pleas-1913)—Semi-rose type. Bright rose, with pearl tints and golden stamens. Large flowers in clusters on tall stems. Is apt to come single the first year.
- PERFECTION 8.0** (Richardson)—Late. Rose type. Lilac white; guards deepest pink shading to white on ends of petals, pinker about their bases. Fragrant. Very upright growth. Vigorous.

- PETER PAN** (Hollis-1907)—Mid-season. Semi-rose type. Lilac rose changing to lilac white. Large, loose and flat. Tall, erect and vigorous.
- PHILIPPE RIVOIRE 9.2** (Riviere-1911)—Early. Rose type. Very dark crimson. Petals round and tooth-shaped. Rare fragrance. Large and well formed.
- PHILOMELE 7.7** (Calot-1861)—Mid-season. Anemone type. Violet-rose, with yellow center. Develops crown of bright rose, edged crimson. Fragrant. Strong and upright. Free blooming.
- PHOEBE CAREY 8.8** (Brand-1907)—Late. Rose type. Rose-pink, with deeper shades in center. Large, broad petals of good substance. Fragrant.
- PHYLLIS KELWAY 8.8** (Kelway-1908)—Mid-season. Rose type. Lavender-flesh, shading to white in center. Large and loose.
- PIERRE DUCHARTEE 8.2** (Crousse-1895)—Late. Rose type. Lilac pink. Fragrant. Large, compact and globular.
- PINK BARONESS SCHROEDER** (Kelway)—See La Verne.
- PINK PEARL.**
- POMPILIA** (Dr. Earnshaw)—Midseason. Double. Shell pink in bud, opening a very delicate pink throughout. A large deep flower.
- PRESIDENT ROOSEVELT 7.5** (Warnaar-1905)—Mid-season. Semi-rose type. Brilliant, deep red.
- PRESIDENT TAFT** (Reine Hortense) 8.7 (Calot-1857) Blaauw-1909)—Mid-season. Bomb type, delicate pink center, flecked with crimson, surrounded by white. Free bloomer, excellent substance, tall and vigorous. Visitors admire this most of all.
- PRESIDENT WILSON 9.4** (Thurlow-1918)—Late. Soft rose pink changing to shell pink. Guards sometimes show crimson markings. Fragrant. Concave. A grand peony.
- PRIDE OF ESSEX 8.8** (Thurlow-1916)—Mid-season. Deep flesh pink. Very large.
- PRIDE OF PAULDING** (Dr. Neeley-1921).
- PRIMEVERE 8.6** (Lemoine-1907)—Mid-season. Bomb type. Creamy-white guards, splashed crimson; light sulphur-yellow center. Fragrant, fairly compact and flat. Tall and vigorous. The most yellow of all double peonies.
- PRINCE OF DARKNESS 7.6** (Brand-1907)—Early. Semi-rose. Uniform rich, dark maroon. Slightly fringed petals with darker shadings on the edges. Very large. Free bloomer.
- PRINCE OF WALES 7.6** (Kelway)—Late. Crown type. Pale lilac-rose, crimson flecked guards. Fragrant. Large and compact. Medium height.
- PRINCESS BEATRICE 7.4** (Kelway-1886)—Mid-season. Crown type. Light violet rose, with cream-white collar and crimson flecked center. Large. Fragrant. Medium height. Strong and vigorous. Free bloomer.
- PRINCESS MAUD 7.0** (Kelway)—Late. Bomb type. Lilac to amber white. Vigorous. Medium height and good habit.
- PRINCESS OLGA** (Kelway).
- PROFESSOR BUDD 7.5** (Terry)—Outer petals pale hydrangea pink, inner petals straw, variegated with crimson.
- PURITY** (Lewis)—Late. "Two rows of large white petals with rich golden center." Tall. Free bloomer.
- QUAKER LADY** (Pleas-1913)—Mid-season. Rose type. Blush-white with deep center. One of the best.
- QUEEN OF PLEASANCE 6.3** (Pleas-1899)—Mid-season. Anemone type. Bright rose guards, salmon pink center. Clustered. Strong, erect stems.

QUEEN VICTORIA 6.8 (Kelway)—Mid-season. Crown type. White, with guards and center flecked crimson; cream white collar. Fragrant. Clustered and free flowering.

QUITE CONTENT (Hollis).

RACHAEL 7.9 (Terry-1900) Mid-season. Rose type. Bright garnet-red, shaded rich ruby-red. Medium large. Very free bloomer. Extra fine.

RALPH 8.5 (Pleas-1913)—Late. Rose type. Bright pink. Very large. Strong and vigorous. Dark foliage.

RAOUL DESSERT 9.0 (Dessert-1910)—Late mid-season. Rose type. Clear mauve shaded carmine-pink with silvery white tints. Enormous. Compact. Erect and vigorous. Free bloomer.

RAUENTHAL (Goos and Koenemann-1913)—Soft lilac, touched with silver. Golden stamens.

RED CROSS 7.3 (Hollis-1904)—Mid-season. Rose type. Wine-red. Large.

REINE HORTENSE (Syn. Pres. Taft) 8.7.

REV. L. W. ATWOOD (Hollis-1908)—Rose type. Pure white. Fine form. Medium size and height. Dark green stems. Vigorous.

RICHARD CARVEL 8.8 (Brand-1913)—Early. Bomb type. Very bright crimson. Large and globular. Tall and stout stems. Profuse bloomer. Fragrant.

ROSA BONHEUR 9.0 (Dessert-1905)—Midseason. Rose type. Light violet-rose with crimson flecked guards. Very large and flat. Wide fringed petals. Clustered. Medium tall and erect. Vigorous.

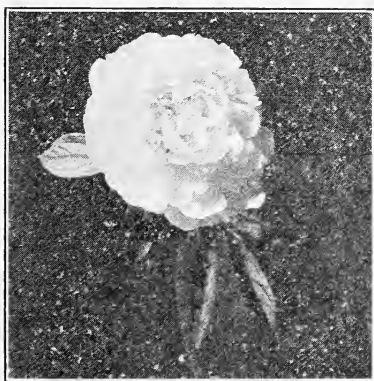
ROSALIND (Crawford-1922)—Late. Rose type. Uniform pale lilac-rose. Large. If grown without disbudding it has several perfect blooms on each stem.

ROSALITA (Hollis-1907)—Bomb type. Violet rose with cream-white center. Large, globular and loose. Tall and erect. Strong stems.

ROSAMOND (Lewis)—Semi-rose type. Large. Fragrant. Medium height. Vigorous.

ROSE HERE 7.4 (Brand-1907)—Solid dark rose, tipped white:

ROSELTHEA (Lewis)—Late. Semi-rose type. Bright pink. Fragrant. Tall, stiff stems. Free bloomer.



Rose Shaylor

ROSE SHAYLOR (Shaylor-1919)—Mid-season. Rose type. Delicate shell-pink with deeper shades at center. Very large. Fragrant. Good stiff stems. Fine foliage. Vigorous and free blooming. The best in our garden in 1922.

- ROSE STANDISH** (Hollis-1919)—Very late. Named after Mr. Hollis' death by Mr. E. P. Wheeler, who says: "Very large size, extra strong grower; dark pink, slightly silvery on edges of outside petals after being open a few days; fine form; free bloomer in clusters. Strong, deep green stems. It is the most double peony I have ever seen. It is impossible for it to fully open, the petals are so tightly lapped over each other. Some seasons it needs help to open even half way, but it does not waterlog."
- ROSETTE 8.9** (Dessert-1918)—Early mid-season. Silvery flesh, shading to salmon at base of petals. Accidental crimson markings on guards. Erect. Vigorous. A fine free blooming pink of exceptional color and substance.
- ROSY DAWN 7.6** (Pleas-1909)—Mid-season. Semi-rose. Rose pink with intermingled golden stamens, filling it with the tints of daybreak. Clustered. Fragrant. Strong and vigorous. Good stems. Mrs. Pleas says: "It is smiles illustrated." This is not the Rosy Dawn by Barr and Sons. As this flower has bloomed in our garden for several years it has attracted universal admiration and has been the favorite at the South Bend Flower Shows.
- R. P. WHITFIELD 7.8** (Richardson)—Late. Rose type. Hydrangea pink. Large compact and flat. Fragrant. Erect. Compact growth.
- RUBRA TRIUMPHANS 6.7** (Guerin-1840)—Early. Semi-double. Very dark crimson. Large and loose. Medium height. Strong growth. Free bloomer.
- RUBY QUEEN** (Hollis)—Ruby red. Large.
- RUTH BRAND 8.1** (Brand-1907)—Mid-season. Bomb type. Soft lavender pink, with deeper lavender shades in center. Delicate fragrance. Very large and compact. Tall and strong.
- RUY BLAS 7.1** (Dessert-1905)—Mid-season. Semi-rose type. China-pink, tinted mauve and tipped with silver. Large. Free bloomer.
- SAMOSET** (Hollis, 1907)—Midseason. Rose type. Delicate rose pink throughout, with occasional deeper pink centers. Very large and showy. Tall and vigorous. Free blooming.
- SAMUEL HENSHAW 7.3** (Richardson-1904)—Late. Rose type. Clear rose-pink, tinged with white. Some of the center petals almost pure white. Very large and full. Erect and vigorous.
- SARAH 8.2** (Pleas-1913)—Mid-season. Bomb type. Light pink, changing to blush-white; with incurved petals. Not large but attractive and perfect in form. Leaves waved on the edges.
- SARAH BERNHARDT 9.0** (Lemoine-1906)—Late mid-season. Semi-rose type. Mauve-rose with silvery tips. Fragrant. Full and double, in clusters. Tall and erect. Free blooming.
- SARAH CARSTENSEN 8.6** (Terry-1901)—Mid-season. Rose type. Soft delicate rose with crimson streaked center. Dwarf but sturdy. Large and compact. Very fine and quite scarce. If introduced today would be in the \$25.00 class.
- SARAH K. THURLOW** (ThurLOW-1919)—Late. Pearly white guard petals. Blush center with salmon shades. Fragrant. Large. Stiff stems and good foliage.
- SARAH M. WETTENGEL** (Wettengel)—Late. Rose type. Blush-white.
- SECRETARY FEWKES 9.1** (Shaylor-1916)—Creamy-white, with lighter center. Very large, with broad rounded petals. Tall, good stems. Vigorous and free blooming.

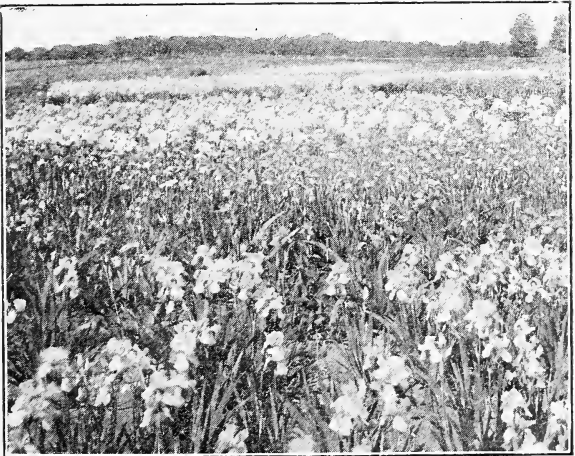
- SERENE** (Franklin)—Rose type. Pure white with carmine edgings on center petals. Full and fragrant. Stiff upright stems.
- SIGNORINETTE** (Kelway, 1900)—Light pink, with lighter shaded center petals.
- SIMONE CHEVALIER** 7.9 (Dessert-1902)—Early. Crown type. Pale lilac-rose. Slight cream-white collar. Some crimson markings. Fragrant. Large and fairly compact. Medium height. Free bloomer.
- SIR THOMAS J. LIPTON** (Kelway-1898)—Mid-season. Semi-double type. Bright rosy-carmine, with golden stamens appearing in center. Very large.
- SPEED-WELL** (Hollis-1907)—“Deep pink, of superior form.”
- SNOW BALL** 7.2 (Hollis-1907)—Rose type. Pure white.
- SOLANGE** 9.7 (Lemoine-1907)—Mid-season. Rose type. Lilac white, with deeper orange salmon tints in center. Large, full and compact. Tall and erect. Vigorous and free blooming. One of the best ever.
- SOPS OF WINE** (Secor)—Brilliant wine red. Large.
- SOUVENIR de L'EXPOSITION de BORDEAUX** 6.4 (Dessert-1896)—Mid-season. Bomb type. Bluish violet-red. Medium size and height. Free blooming.
- SOUVENIR de L'EXPOSITION UNIVERSELLE** (Calot, 1867)—Late. Rose type. Clear violet rose, full and double. Fragrant. Large.
- SOUVENIR de LOUIS BIGOT** 8.8 (Dessert-1913)—Mid-season. Rose type. Bright Bengal-rose, changing to salmon-pink with silvery reflex. Very large and convex.
- SPLENDIDA** 8.3 (Kelway)—Early mid-season. Rose type. Light violaceous pink. Very fragrant. Very large and globular. Vigorous and free flowering.
- STANDARD BEARER** 8.8 (Hollis-1905)—Mid-season. Bomb type. Uniform, light violet-rose. Fragrant. Very high built, globular and compact. Large. Medium height. Strong, stiff stems. Very free bloomer. Choice and rare.
- STEPHANIE** 7.8 (Terry-1891)—Mid-season. Semi-double. Delicate pink, shading to white in center and showing numerous golden stamens. Large and flat.
- STRASBURG** (Goos and Koenemann-1911)—Silvery lilac-rose. Large. Compact and well formed.
- SUMMER DAY** 7.7 (Kelway-1895)—Late. Flat rose type. Creamy white, with blush tint when first opened. Tall.
- SUPREME** 7.3 (Hollis-1907)—Late. “A lovely shade of pink, form round and full.”
- SUSAN B. ANTHONY** (Brand-1907)—Semi-rose type. Delicate creamy-pink on a white ground as the flower opens, changing to white. Medium size.
- SUZANNE DESSERT** 7.7 (Dessert and Mechin-1890)—Mid-season. Semi-rose type. China-pink with silvered tips. Large and full. Clustered. Tall and erect.
- SUZETTE** 8.0 (Dessert-1911)—Mid-season. Semi-rose type. Bengal-rose, slightly shaded carmine-purple with silvery reflex, showing stamens. Strong stems.
- SWEETHEART** (Hollis-1909)—“A very beautiful pink peony and a splendid keeper.”
- T. B. TERRY** 8.3 (Pleas, 1909)—Mid-season. Rose type. Creamy white, with flesh tints. Large flat flowers on stiff stems.
- THE EAGLE** (Crawford-1922)—Late. Rose type. Blush white with an occasional marking of crimson on the central petals. Fragrant. Prolific bloomer. Full and double. Strong erect growth.
- THE GEM** 8.3 (Pleas-1909)—Mid-season. Rose type. Dark crimson, very compact, clustered. Very tall, four feet. Erect, good stems. Profuse bloomer when well established. Unusually striking. Flowers have slight bluish caste when fully open.

- THERESE** 9.8 (Dessert-1904)—Mid-season. Rose type. Violet-rose, changing to lilac-white in center. Very large. Strong and erect. Medium tall. Free bloomer.
- TOM THUMB** (Terry)—“A dwarf M. Jules Elie.”
- TOURANGELLE** 9.4 (Dessert-1910)—Late mid-season. Rose type. Flesh white, tinged rose and salmon. Long, upright stems. Vigorous. Very large and flat. Extra fine.
- TRAGEDY** 8.3 (Hollis-1908)—Mid-season. Bomb type. Very brilliant and dark crimson. Medium large and globular. Tall and erect. Free bloomer. Fragrant.
- TRIUMPH de L'EXPOSITION de LILLE** 7.8 (Calot-1865)—Mid-season. Rose type. Pale pink, with darker tints. Fragrant. Large and compact. Strong and vigorous. Dwarf.
- TWENTIETH CENTURY** (Hollis-1908)—Late mid-season. Rose type. Light tyrian rose. Very large, compact and flat.
- UMBELLATA ROSEA** 7.4 (Dessert-1895)—Very early. Rose type. Violet-rose, shading to amber white center. Large. Fragrant. Very strong and upright. Free blooming.
- USONIA** (Hollis-1907)—“Pink flushed with white; large size and good form.” A very fine peony, little known.
- VARIEGATA** (Terry)—Light rose, with darker rose stripes. Yellow stamens show thru flower. Very beautiful and well worth growing.
- VENUS** 8.3 (Kelway)—Midseason. Crown type. Pale hydrangea pink, with lighter collar. Fragrant. Very large and tall. Free flowering.
- VERA TERRY** (Terry)—White with tinge of lilac in center. Large. Terry's last and best.
- VERIBEST** (Hollis-1907)—Rose type. Milk-white, guards slightly splashed crimson. Medium compact and globular.
- VICTOIRE de la MARNE** 8.3 (Dessert-1915)—Mid-season. Bright amaranth-red with silvery reflex. Very large and globular. Strong stems. Vigorous.
- VINETTE** (Lewis)—Crown type. Delicate blush-pink. Fragrant. Medium size. Full and compact. Dwarfish. Good for cutting.
- VIRGINIE** 7.6 (Calot-1858)—Mid-season. Semi-rose type. Lilac-rose, with lighter collar. The bloom develops into a very high built, compact mass, after opening. Large, fragrant. Vigorous and free blooming. One of our favorites.
- VIRGO MARIA** 6.5 (Calot-1859)—Late mid-season. Bomb type. Pure white. Large.
- WALTER DONALD CRAWFORD** (Crawford-1921)—Rose-white guards, with a center bomb of overlapping yellow petals. As it ages the bomb is covered with a silver sheen, like a morning frost.
- WALTER FAXON** 9.3 (Richardson-1904)—Midseason rose type. Bright rose, uniform and delicate but with deeper shades at center. Medium size. Tall and strong. Free bloomer. Scarce. A desirable pink which holds its color.
- WALTER MORGAN** 8.0 (Pleas-1900)—Early. Anemone type. White with yellow center. Very fine. The best we have seen of the anemone type.
- WELCOME GUEST** 7.9 (Hollis-1904)—Mid-season. Semi-double. Bright rose, changing to rose-white. Fragrant. Large and loose. Tall and erect. Vigorous. Free bloomer.
- W. F. CHIRSTMAN** (Franklin)—Rose type. Flesh-pink. Very double. Fragrant. Strong. Free bloomer.
- WIDE WIDE WORLD** (Hollis-1910).

- WIESBADEN** 8.0 (Goos and Koenemann-1911)—Semi-rose type. Flesh white and light rose; intermingled golden stamens. Strong and upright. Free blooming.
- WILLIAM F. TURNER** 8.4 (Shaylor-1916)—Mid-season. Very dark garnet. Tall and vigorous.
- WILLIAM PENN** 7.9 (Brand-1907)—Mid-season. Semi-rose type. Light rose changing to lighter tints on edges of somewhat notched petals. Very large and compact. Vigorous. Profuse bloomer.
- WILTON LOCKWOOD** (Shaylor-1917)—“Pink, with strong carmine markings.” Large.
- WINNIFRED DOMME** 7.8 (Brand-1913)—Bomb type. Bright, uniform crimson. Medium large. Dwarfish. Strong erect stems produce but a single bloom on each. Very distinct.
- WINNIKEN** 8.1 (Thurlow-1915)—Very late. Cherry pink. Buds very tight and sometimes inclined to burst. Tall and vigorous.
- YAYOURA** (Unknown)—Bomb type. All petals are red and white striped. Perfect form. Very unique and will keep many days when cut.
- ZEST** (Hollis-1907)—Late. “Silvery rose-pink.” Very fine.
- TREE PEONY** (*Paeonia Moutan*)—Early. Double pink. Perfectly hardy but having woody stems that must not be removed. In our climate needs protection from Dec. 1, to April 1.

TENUIFOLIA

- TENUIFOLIA** (Double)—Bright crimson. Very double. Fern-like foliage. Dwarf. Absolutely unique and very desirable.
- TENUIFOLIA** (Single)—Same as above, but with a distinctly single-type flower.



Iris in the Crawford Garden

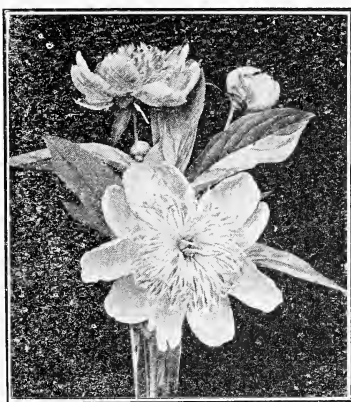
Send for Iris List

Japanese Peonies



- ABBE** (Lewis)—Jap. Deep rose, with full ruffled center. Edges tinged with yellow.
- ALMA** 8.4 (Shaylor)—Jap. Pinkish outer petals, with clear incurved golden petals in center.
- ALTER CANDLES** 7.5 (Pleas-1908)—Jap. Delicate pink guard petals, surrounding numerous rounded, wax-like petals, with crimson tips. Clustered.
- AMO-NO-SODE.** Jap. Very large. Bright rose, shading lighter toward the edge of the petals.
- ARISTOCRAT** (Hollis-1909)—Jap. Mid-season. Rose pink, with long and narrow golden filamental petals.
- ATTRACTION** 7.5 (Hollis-1906)—Midseason Deep Tyrian rose guards with narrow center petals tipped yellow. Very large, fairly compact. Fragrant. Tall, vigorous and a free bloomer.
- CERISE JAP** (Lewis-1922)—Jap. Striking cerise. Free blooming. Stems medium. Very fine Jap of which we bought the entire stock.
- CROWN OF THORNS** (Hollis-1907)—Jap. Mid-season. Reddish-magenta. Center filamental petals in a thistle-like tuft.
- CURRENT JAP**—Bright current guards, with a tufted center of lighter stamenoids. Good stems and foliage.
- DOG ROSE** (Kelway)—Jap. Delicate pink petals, with rounded tips and a mass of golden stamens. One of the best pink Japs.
- DR. EDGAR PLEAS** (Syn. Ostrich Plume) (Pleas)—Jap. Lilac-pink. Canary center. This has gone a step further than the average Jap, for the central petals have developed in'o feathery plumes.
- EILEEN KELWAY** (Kelway)—Jap. Mid-season. White, central petaloids edged salmon. Good foliage.

- ESTHER 7.7** (Terry)—Jap. Pale violet rose, with almost white tints on insides of petals. This is really one step beyond the Japs and is almost an anemone type.
- EXQUISITE 1ST**—Jap. Mid-season. White. Free bloomer. We consider it the best white Jap bloomer we have seen. With us the roots are long and slender.
- FLASHLIGHT 7.6** (Hollis-1907)—Jap. Early. Light Tyrian rose guards, narrow central petals of amber yellow, shading to pink at base. Large, globular. Medium height, erect and vigorous.
- FUYAJO**—Jap. Velvety, dark maroon, almost black, guard petals; center petaloids striped crimson and white. Coarsely crinkled foliage. Fine for cutting.
- GLORY 7.3** (Hollis-1907)—Jap. Mid-season. Light Tyrian-rose guards. Narrow central petals of yellow; tipped with silver. Medium size, erect. Rightly named. One of the finest Japs.
- GOLDEN ROSE**—Jap. Mid-season. Cherry, with fine golden center. Fine stems and foliage. One of the very best.



Goldmine

- GOLDMINE** (Hollis)—Jap. Lilac pink. Deep, heavy yellow center. Large. Vigorous. Fine in every way.
- GYPSY 7.5** (Hollis-1904)—Jap. Mid-season. Guards, deep Tyrian rose, with bright gold center. Large and flat. Medium tall.
- HETTIE ELLIOTT** (Pleas)—Jap. Rose pink guards with upright yellow center petaloids.
- INNOCENCE 8.2** (Hollis-1904)—Jap. Mid-season. Lilac-rose guards, center of canary yellow, changing to white. Medium size. Fragrant. Tall. Free blooming.
- ISANI GIDUI**—Jap. Pure white with sulphur shades. Bright golden stamens. Tall and vigorous. Large. One of the very best of the Japs.
- KAMARGO** (Lewis)—Jap. Pink guards with showy golden center. Medium height, strong and vigorous.
- KING OF ENGLAND 8.4** (Kelway-1902)—Jap. Deep ruby-madder; center petals of pure gold, long and narrow, with crimson stripes. Very striking.
- LIEUT. HOBSON** (Hollis, 1903)—Jap. Deep purplish guards with golden center.
- MARGARET ATWOOD**—Pure white, cup shaped and with deep golden center. Very large. Strong and vigorous.
- MIKADO** (Japan's Exhibit, Chicago-1893)—Jap. Velvety crimson guards, forming a cup to enclose a filigree cushion of crimson petaloids, edged and tipped gold.

MIYO-NO-HANA--Jap.

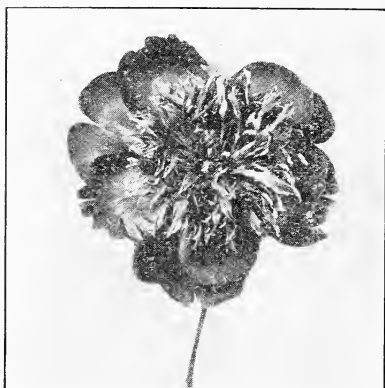
MRS. C. W. WARD--Mid-season. Deep pink, with center of deep yellow petaloids.

MRS. HOBART M. CABLE (Crawford-1922)--Jap. Clear, brilliant, light crimson. Sturdy growth, with good stems. Very distinct and new in color.

MUTSU (Crawford-1922)--Jap. Deep, clear pink, with long filamental petals tipped with gold.

OHANAGASA--Jap.

POCAHONTAS (Pleas-1913)--Jap. Carmine-rose guards, with copper color center. Filamental petals long and scraggly.



Prince Ito

PRINCE ITO (Lewis)--Jap. Deep maroon guards, full and rounded, with a velvet sheen. The center filamental petals are narrow with broader tips, and on the inside are the same color as the guards, tipped pale gold. The outside or under side of these petals are of solid, pale gold. As it bloomed in 1924 it was a deeper, finer flower than Fuyajo. We bought the entire stock from Mrs. Lewis.

PRINCESS DULEEP SINGH (Kelway)--Jap. Light pink, with center tuft of yellow. Medium height.

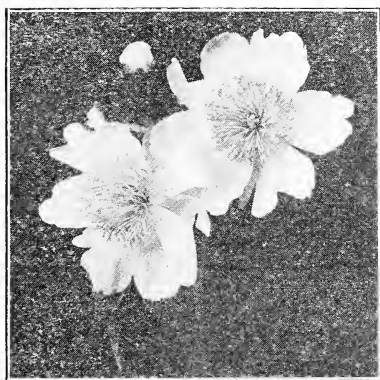


QUEEN ALEXANDRA 7.7 (Kelway-1902)--Jap. Large white petals with an incurved center of bright yellow, narrow filamental petals.

SIR MADHU SINGH (Kelway)--Jap. China-pink, with golden center.

SNOW WHEEL--Jap. Pure white, broad waxy petals. Center filamental petals broad and erect.

- SOME-GA-NAKC**—Jap. Late. Very dark red, with a satiny reflex. Yellow filamental petals. A very fine flower and a vigorous bloomer.
- SUNBEAM 8.3** (Hollis-1904)—Jap. Mid-season. Pale rose-pink, changing to lilac white. Center canary-yellow, changing to cream-white, flat and loose. Fragrant. Medium height. Erect.
- TAMATBACO**—Jap. Bright China-pink. Light yellow petaloids. Very large. Very scarce and in great demand.
- TOKIO**—Jap. Clear pink with large center of golden petaloids. Very large. An eastern specialist says: "It is the finest pink Japanese peony."
- TORO-NO-MAKI** (Japan)—Jap. Early mid-season. Lilac-white guards, central petaloids white and clear amber yellow. Medium height. Strong and erect. Free bloomer.
- WHITE LADY 8.5** (Kelway-1900)—Japanese Very fine white with yellow center.
- YAMATO-SANGAI**—Jap. Variable in bloom, but a beautiful peony.
- YOKOHAMA WHITE** (From the Yokohama Nurseries)—Jap. White. Very fine.



No. 4 A

NO. 4A—We bought the seedlings left by Dr. Chas. S. Minot and have found some very good ones among them. No. 4A is pale rose guards with long yellow stamenoids and is new and very striking. We can supply a limited number at \$10 each.

Single Peonies

- ALBIFLORA**—Single. Pure white guards; broad crown of golden yellow stamens in center. Clustered.
- CLIO 8.5** (Peterson-1901)—Single. Early. Pink guards, enclosing mass of long golden stamens. Fragrant. Clustered. Erect and vigorous. Does not fade white in sun.
- DARKNESS 7.1** (Brand-1913)—Single. Very early. Very dark maroon with darker shades at base of petals and a bold cluster of golden stamens. Tall, strong stems. Free bloomer. Fragrant. Fine cut flower.
- HARRIET OLNEY** (Brand-1920)—Single. Mid-season. Soft rose-pink, with prominent yellow center. Petals long and broad. Large. Medium height. Tall straight stems.
- HESPERUS** (Thurlow)—Single. Mid-season. Clear pink.
- IDA PLEAS** (Pleas)—Single. White, minutely dotted with crimson. A single "Asa Gray."
- LA FIANCEE** (Syn. The Bride) 8.4 (Dessert-1902)—Single. Pure white with very showy stamens. Tall. Vigorous.
- LE JOUR 8.2** (Shaylor)—Single. Pure white, with yellow stamens showing red stigmas. Fine substance. Large.
- L'ETINCELANTE 8.1** (Dessert-1905)—Single. Brilliant carmine, with silvery margin. Broad petals. Large. Erect and vigorous.
- MAY DAVIDSON** (Pleas)—Single. Early. Very delicate pink, tipped with white, about a tuft of golden stamens. Very large. Tall and vigorous.
- MELLIN KNIGHT** (Brand-1920)—Single. Bright rich crimson, with long narrow and round petals. Tall, straight stems.
- MINNEHAHA** (Pleas)—Single. Dark red.
- MISTRAL 7.3**. Dessert-1905)—Single. Brilliant pink. Golden stamens. Prolific bloomer.
- MRS. KEY 7.9** (Terry)—Single. Early. Deep, glowing crimson. Yellow stamens. Tall.
- MRS. LAURA COATES REED** (Hollis)—Single. Mid-season. Dark purple-garnet with golden stamens. One of the best single reds. Named by Mr. Reed in honor of his wife.
- MRS. WOODWARD** (Terry)—Single. Late. Purplish-crimson, tipped white, changing to bright rose. Large.
- NYMPHE** (Dessert)—Single. Pink of delicate shade which does not fade to white.
- PLEAS QUEEN** (Pleas,)—Early. Single. White, with yellow center. Vigorous and free flowering.
- PRIDE OF LANGPORT 8.9** (Kelway-1909)—Single. Brilliant, but soft peach-pink. Large. Very fine.
- RED JACKET** (Crawford-1922)—Single. Dark ruby color, which does not fade. Strong and vigorous. Very free bloomer.
- R. J. PLEAS** (Pleas)—Single. Early. Deep crimson. Yellow stamens. Tall. One of the best landscape varieties.
- STANLEY 7.9** (Kelway, 1890)—Early mid-season. Single. Clear dark crimson. Large. Clustered. Vigorous and free flowering.
- WHITE JAPAN**—Single. An exceptionally good single white.
- WHITE SWAN 9.1** (Pleas-1913)—Single. Pure white, large, waxy petals around a center cushion of golden stamens. Faint green tinge in center. Large and clustered.



